

Data sheet

Commercial Art.No.: 99.202.9996.0

PCB pin header 8113 S / 2 G OB OF

PCB pin header, connection method depends on used socket part , 2 poles, pitch: 5 mm, type of packing: carton, color: grey



| | |
|--------------------|---------------|
| Commercial Art.No. | 99.202.9996.0 |
| EAN | 4015573274181 |
| Order Unit | 100 |

Certificates / Approvals



Technical data

General

| | |
|--|----------------|
| Modular spacing | 5 mm |
| Soldering process | Wave soldering |
| Packaging | Carton |
| Number of poles | 2 |
| Number of levels | 1 |
| Marking | No |
| Fastening | None |
| Mating direction towards (circuit) board | 90° |

Technical data

| | |
|--------------------------|--------|
| Rated current | 12 A |
| Overvoltage Category I | 1000 V |
| Overvoltage Category II | 400 V |
| Overvoltage Category III | 250 V |
| Rated impulse voltage | 4 kV |

Technical Data UL/CSA

| | |
|------------------------|-------|
| Voltage UL | 300 V |
| Current field wiring | 15 A |
| Current factory wiring | 15 A |
| Voltage CSA | 300 V |
| Current CSA | 15 A |

Other

| | |
|-----------------------------|---------------|
| Type of insulation material | Thermoplastic |
| Color | Grey |

| | |
|--------------------------|--------|
| Height | 12 mm |
| Length | 10 mm |
| Depth | 8.4 mm |
| Material contact base | CuZn |
| Material contact surface | Sn |

Classification

| | |
|------------|----------|
| ECLASS 11 | |
| ECLASS 8.1 | 27440402 |
| ETIM 7.0 | EC002637 |
| ETIM 6.0 | EC002637 |
| ETIM 5.0 | EC002637 |
| ETIM 4.0 | EC002637 |

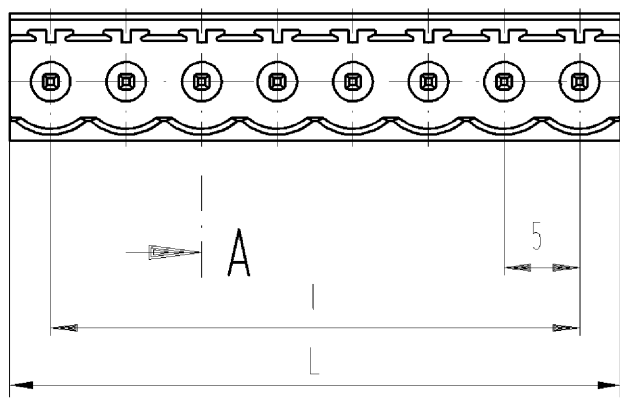
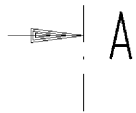
Product compliance

| | |
|------------------------------|-----------|
| ROHS conformity status | Compliant |
| REACH-SVHC conformity status | Compliant |

Fits with

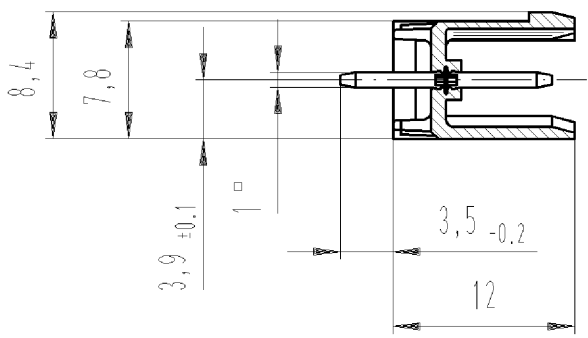
| Commercial Art.No.: | Article-type description: | Description: |
|---------------------|-----------------------------------|---|
| 25.220.3253.0 | PCB connector 8113 B / 2 TOP OB | PCB female connector with front/top screw connection, 2 poles, max. cross section: 2.5 mm ² , pitch: 5 mm, type of packing: carton, color: grey |
| 25.220.0253.0 | PCB connector 8113 B / 2 TOP | PCB female connector with front/top screw connection, 2 poles, printed version, max. cross section: 2.5 mm ² , pitch: 5 mm, type of packing: carton, color: grey |
| 01.060.3253.0 | PCB connector 8113 BK / 2 OB | PCB female connector with Crimp connection, 2 poles, max. cross section: 2.5 mm ² , pitch: 5 mm, type of packing: carton, color: grey |
| 01.060.0253.0 | PCB connector 8113 BK / 2 | PCB female connector with Crimp connection, 2 poles, printed version, max. cross section: 2.5 mm ² , pitch: 5 mm, type of packing: carton, color: grey |
| 25.320.3253.0 | PCB connector 8113 B / 2 OB | PCB female connector with screw connection with rising cage clamp system, 2 poles, max. cross section: 2.5 mm ² , pitch: 5 mm, type of packing: carton, color: grey |
| 25.320.0253.0 | PCB connector 8113 B / 2 | PCB female connector with screw connection with rising cage clamp system, 2 poles, printed version, max. cross section: 2.5 mm ² , pitch: 5 mm, type of packing: carton, color: grey |
| 25.325.3253.0 | PCB connector 8113 B / 2 VR OB | PCB female connector with screw connection with rising cage clamp system, 2 poles, max. cross section: 2.5 mm ² , pitch: 5 mm, type of packing: carton, color: grey |
| 25.325.0253.0 | PCB connector 8113 B / 2 VR | PCB female connector with screw connection with rising cage clamp system, 2 poles, printed version, max. cross section: 2.5 mm ² , pitch: 5 mm, type of packing: carton, color: grey |
| 25.326.3253.0 | PCB connector 8113 B / 2 VL OB | PCB female connector with screw connection with rising cage clamp system, 2 poles, max. cross section: 2.5 mm ² , pitch: 5 mm, type of packing: carton, color: grey |
| 25.326.0253.0 | PCB connector 8113 B / 2 VL | PCB female connector with screw connection with rising cage clamp system, 2 poles, printed version, max. cross section: 2.5 mm ² , pitch: 5 mm, type of packing: carton, color: grey |
| 25.820.3253.0 | PCB connector 8113 BFK / 2 TOP OB | PCB female connector with tension spring connection, 2 poles, max. cross section: 2.5 mm ² , pitch: 5 mm, type of packing: carton, color: grey |

| | | |
|---------------|------------------------------------|--|
| 25.820.0253.0 | PCB connector 8113 BFK / 2 TOP | PCB female connector with tension spring connection, 2 poles, printed version, max. cross section: 2.5 mm ² , pitch: 5 mm, type of packing: carton, color: grey |
| 25.399.9853.0 | PCB connector 8113 BSK / 2 0,75 OB | PCB female connector with screw connection with rising cage clamp system, 2 poles, max. cross section: 2.5 mm ² , pitch: 5 mm, type of packing: carton, color: grey |



Schnitt A-A
section A-A

gezeichnete Ausführung: 8-polig
drawn version 8 poles



Weitere Daten siehe Katalog
further data see catalog

| Teile-Nr. part no. | Pol- zahl pole | L | l | Typ type | Teile-Nr. part no. | Pol- zahl pole | L | l | Typ type |
|-----------------------|----------------------|------|----|--------------------|-----------------------|----------------------|-------|-----|--------------------|
| 99.202.9996.0 | 2 | 10,0 | 5 | 8113S/ 2G OB GR OF | 99.213.9996.0 | 13 | 65,0 | 60 | 8113S/13G OB GR OF |
| 99.203.9996.0 | 3 | 15,0 | 10 | 8113S/ 3G OB GR OF | 99.214.9996.0 | 14 | 70,0 | 65 | 8113S/14G OB GR OF |
| 99.204.9996.0 | 4 | 20,0 | 15 | 8113S/ 4G OB GR OF | 99.215.9996.0 | 15 | 75,0 | 70 | 8113S/15G OB GR OF |
| 99.205.9996.0 | 5 | 25,0 | 20 | 8113S/ 5G OB GR OF | 99.216.9996.0 | 16 | 80,0 | 75 | 8113S/16G OB GR OF |
| 99.206.9996.0 | 6 | 30,0 | 25 | 8113S/ 6G OB GR OF | 99.217.9996.0 | 17 | 85,0 | 80 | 8113S/17G OB GR OF |
| 99.207.9996.0 | 7 | 35,0 | 30 | 8113S/ 7G OB GR OF | 99.218.9996.0 | 18 | 90,0 | 85 | 8113S/18G OB GR OF |
| 99.208.9996.0 | 8 | 40,0 | 35 | 8113S/ 8G OB GR OF | 99.219.9996.0 | 19 | 95,0 | 90 | 8113S/19G OB GR OF |
| 99.209.9996.0 | 9 | 45,0 | 40 | 8113S/ 9G OB GR OF | 99.220.9996.0 | 20 | 100,0 | 95 | 8113S/20G OB GR OF |
| 99.210.9996.0 | 10 | 50,0 | 45 | 8113S/10G OB GR OF | 99.221.9996.0 | 21 | 105,0 | 100 | 8113S/21G OB GR OF |
| 99.211.9996.0 | 11 | 55,0 | 50 | 8113S/11G OB GR OF | 99.222.9996.0 | 22 | 110,0 | 105 | 8113S/22G OB GR OF |
| 99.212.9996.0 | 12 | 60,0 | 55 | 8113S/12G OB GR OF | 99.223.9996.0 | 23 | 115,0 | 110 | 8113S/23G OB GR OF |
| | | | | | 99.224.9996.0 | 24 | 120,0 | 115 | 8113S/24G OB GR OF |

Tolerierung nach DIN 7167/Tolerance system acc. to DIN 7167.
(This DIN-standard describes the envelope principle. According to the envelope principle the deviations of form and parallelism are limited by the size tolerances).

ja/yes Stoffverbots- und Deklarationsliste nach UU-TQM-05/03 ist einzuhalten.
Conformity with Wieland document UU-TQM-05/03 (list of prohibited / declarable hazardous substances) to be declared!

Freitoleranz nach
General tolerance

CAD - Zeichnung, keine manuellen Änderungen
CAD - drawing, no manual modifications allowed

1.Verwendung:
First Use:

Blatt: 1 von 1
Sheet: 1 of 1

| | | | | | | | | | | |
|-------------------|--|-------------------------------|--------------------|-----------------------------|---------------------------|-------------------------------|--|---------------------------------|--|-------|
| / | | | Werkstoff/Material | | 2005 | Tag/Date | Name | Zeichnung Nr./Drawing No. | | Index |
| / | | | | | gezeichnet drawn | 14.10. | Schmitt J. | T 99.202.9996.0 01K | | |
| / | | | Maßstab/Scale | | geprüft checked | - | - | Maße in mm/Dimensions are in mm | | |
| / | | | 2:1 | | Normgepr. Stand. check | - | - | | | |
| / | | Vol. | mm ³ | Offl./Surf. | mm ² | Ersatz für/Replacement for: - | | | | |
| / | | | wieland | | Type | Benennung/Tittle | | | | |
| / | | | | | 8113 S / | LP_GEHAEUSESTIFTLEISTE | | | | |
| / | | | | Elektrische Verbindungen | ..G OB GR OF | | Rastermaß 5 Farbe: grau / pitch 5 colour: grey PCB header | | | |
| Änderung/Revision | | Datum / Blatt Date / Sheet | | | | | | | | |

These dimensions will be especially checked at delivery
Only inspection dimensions
With /E marked dimensions are only valid for internal use

Diese Maße werden bei Abnahme besonders geprüft
Ausschließlich Prüfmaße
MIT /E gekennzeichnete Maße sind nur für interne Zwecke gültig

Weitergabe sowie Vervielfältigung dieses Dokuments, Verwertung und Mitteilung seines Inhalts sind verboten, soweit nicht ausdrücklich gestattet.
The reproduction, distribution and utilization of this document as well as the communication of its contents to others without express authorization is prohibited.

992029996001K_2 CADW1006 Bch10005010-117117493470-01300000