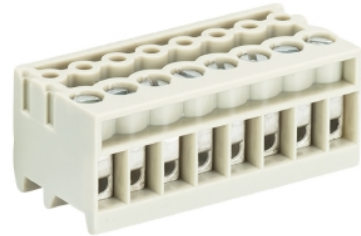


## Data sheet

Commercial Art.No.: 25.602.5853.0

Pluggable PCB Terminal 8543 / 8 OB

Pluggable-PCB terminal, 8 poles, pitch: 3.5 mm, type of packing: carton,color: grey



Commercial Art.No.	25.602.5853.0
EAN	4015573312746
Order Unit	50

Certificates / Approvals



## Technical data

### General

Modular spacing	3.5 mm
Connection type	screw connection
Soldering process	None
Packaging	Carton
Number of poles	8
Marking	No
Mating direction towards connector	90°

### Technical data

Nominal cross section	1 mm <sup>2</sup>
Rated current	6 A
Overvoltage Category I	690 V
Overvoltage Category II	250 V
Overvoltage Category III	160
Rated impulse voltage	2.5 kV
Wire strip length	5 mm

### Connection Data

Minimum cross section solid	0.14 mm <sup>2</sup>
Maximum cross section solid	1.5 mm <sup>2</sup>
Minimum cross section fine stranded	0.14 mm <sup>2</sup>
Maximum cross section fine stranded	1 mm <sup>2</sup>
Wire strip length	5 mm

### Technical Data UL/CSA

Cross section UL	22-16 AWG
Voltage UL	300 V

Current field wiring	10 A
Current factory wiring	10 A
Cross section CSA	22-16 AWG
Voltage CSA	300 V
Current CSA	10 A

#### Other

Type of insulation material	Thermoplastic
Color	Grey
Height	11.6 mm
Length	28 mm
Depth	13 mm
Material attachment screw	Steel
Material contact base	CuZn
Material contact surface	Sn

#### Classification

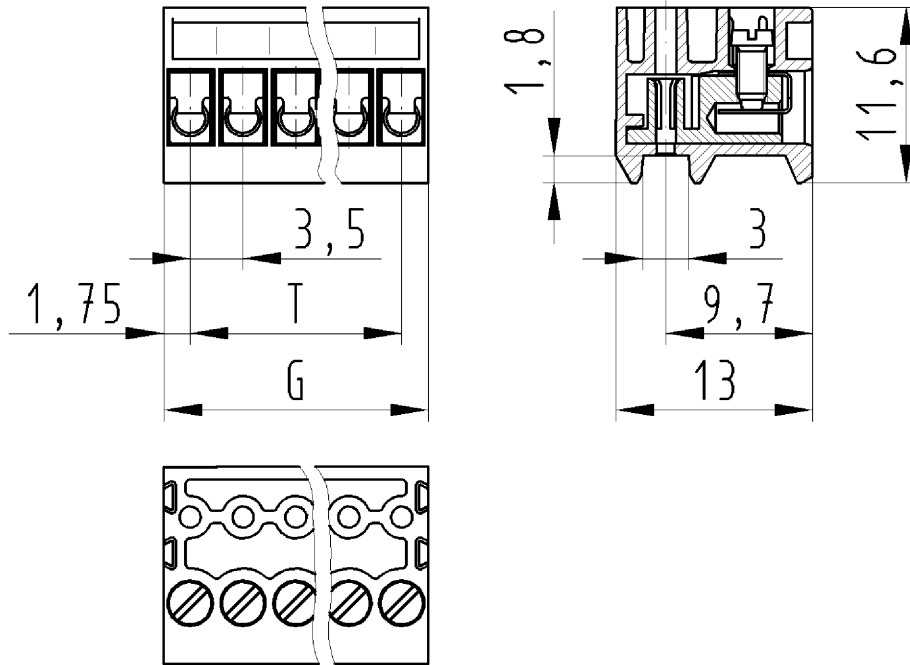
ECLASS 8.1	27440402
ETIM 7.0	EC002637
ETIM 6.0	EC002637
ETIM 5.0	EC002637

#### Product compliance

ROHS conformity status	Compliant/Exempted
ROHS exceptions	III-6(c)
REACH-SVHC conformity status	Duty-To-Declare
REACH-SVHC substances	Lead
REACH-SVHC CAS numbers	7439-92-1

#### Fits with

Commercial Art.No.:	Article-type description:	Description:
Z5.532.0825.0	PCB pin header 8543... /8 90° D1.0/0.8	PCB pin header, 8 poles, pitch: 3.5 mm, type of packing: carton, color:grey
Z5.532.3825.0	PCB pin header 8543... /8 90° D1.0/1.0	PCB pin header, 8 poles, pitch: 3.5 mm, type of packing: carton, color:grey
Z5.531.0825.0	PCB pin header 8543... /8 D1.0/0.8	PCB pin header, 8 poles, pitch: 3.5 mm, type of packing: carton, color:grey
Z5.531.3825.0	PCB pin header 8543... /8 D1.0/1.0	PCB pin header, 8 poles, pitch: 3.5 mm, type of packing: carton, color:grey



für folgende Tabellen-Zchnng.:  
25.602.5253.0 8543/.. OB

LP. STECKKLEMME  
25.602.5253.0 10W  
30.10.2007 DÜT  
M 2:1