

HIGH EFFICIENCY RECTIFIERS

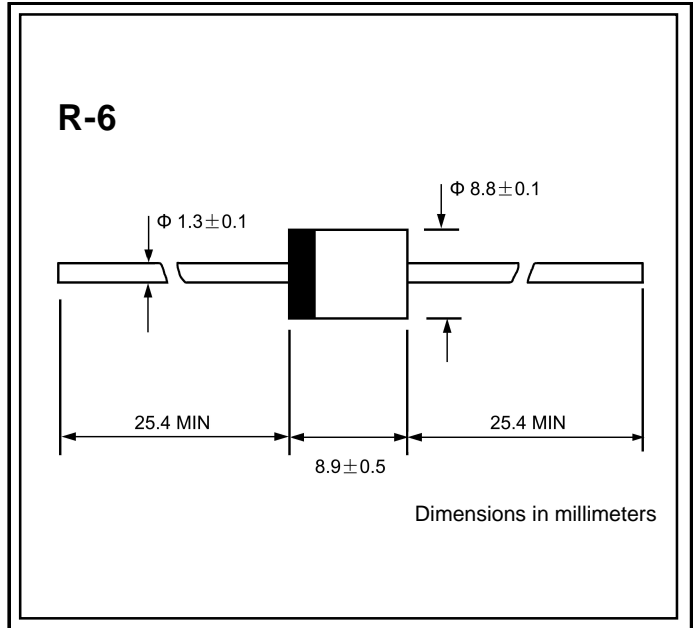
VOLTAGE RANGE: 50 --- 1000 V
CURRENT: 6.0 A

FEATURES

- ◇ Low cost
- ◇ Low leakage
- ◇ Low forward voltage drop
- ◇ High current capability
- ◇ Easily cleaned with alcohol, Isopropanol and similar solvents
- ◇ The plastic material carries U/L recognition 94V-0

MECHANICAL DATA

- ◇ Case: JEDEC R-6, molded plastic
- ◇ Terminals: Axial lead, solderable per MIL-STD-202, Method 208
- ◇ Polarity: Color band denotes cathode
- ◇ Weight: 0.072 ounces, 2.04 grams
- ◇ Mounting position: Any



MAXIMUM RATINGS AND ELECTRICAL CHARACTERISTICS

Ratings at 25°C ambient temperature unless otherwise specified.

Single phase, half wave, 60 Hz, resistive or inductive load. For capacitive load, derate by 20%.

		HER 601	HER 602	HER 603	HER 604	HER 605	HER 605P	HER 606	HER 607	HER 608	UNITS
Maximum recurrent peak reverse voltage	V_{RRM}	50	100	200	300	400	400	600	800	1000	V
Maximum RMS voltage	V_{RMS}	35	70	140	210	280	280	420	560	700	V
Maximum DC blocking voltage	V_{DC}	50	100	200	300	400	400	600	800	1000	V
Maximum average forward rectified current 9.5mm lead length, @ $T_A=75^\circ C$	$I_{F(AV)}$	6.0									A
Peak forward surge current 8.3ms single half-sine-wave superimposed on rated load @ $T_J=125^\circ C$	I_{FSM}	200									A
Maximum instantaneous forward voltage @ 6.0A	V_F	1.0		1.3		1.0		1.7			V
Maximum reverse current @ $T_A=25^\circ C$ at rated DC blocking voltage @ $T_A=100^\circ C$	I_R	10.0 200.0									μA
Maximum reverse recovery time (Note1)	t_{rr}	50						75			ns
Typical junction capacitance (Note2)	C_J	100						65			pF
Typical thermal resistance (Note3)	$R_{\theta JA}$	12									$^\circ C/W$
Operating junction temperature range	T_J	- 55 ---- + 125									$^\circ C$
Storage temperature range	T_{STG}	- 55 ---- + 150									$^\circ C$

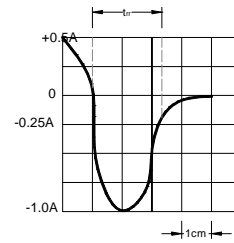
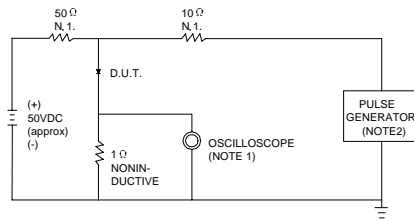
NOTE: 1. Measured with $I_F=0.5A$, $I_R=1A$, $I_{rr}=0.25A$.

2. Measured at 1.0MHz and applied reverse voltage of 4.0V DC.

3. Thermal resistance junction to ambient.

www.galaxycn.com

FIG.1 -- TEST CIRCUIT DIAGRAM AND REVERSE RECOVERY TIME CHARACTERISTIC



NOTES: 1. RISE TIME = 7ns MAX. INPUT IMPEDANCE = 1MΩ. 22pF.
2. RISE TIME = 10ns MAX. SOURCE IMPEDANCE = 50Ω.

SET TIME BASE FOR 10/20 ns/cm

FIG.2 -- TYPICAL FORWARD CHARACTERISTIC

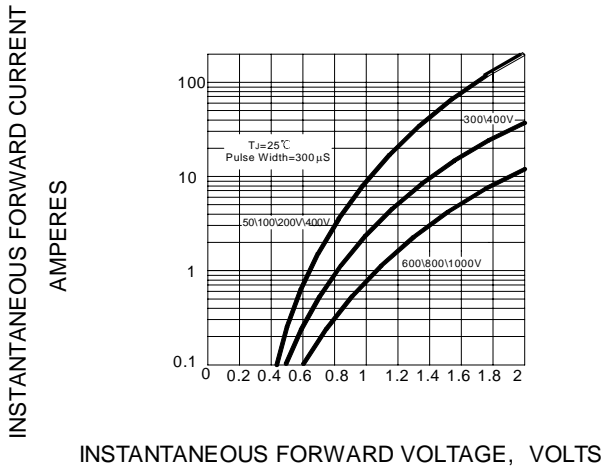


FIG.3 -- FORWARD DERATING CURVE

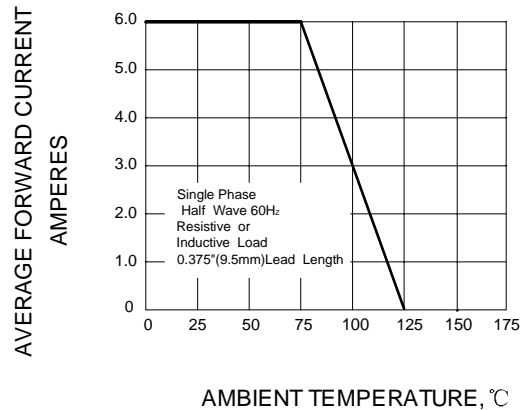


FIG.4 -- TYPICAL JUNCTION CAPACITANCE

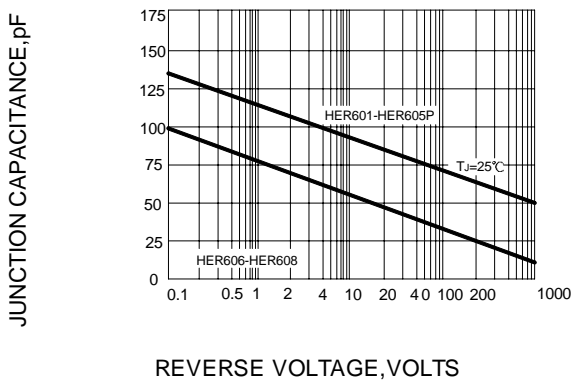


FIG.5 -- PEAK FORWARD SURGE CURRENT

