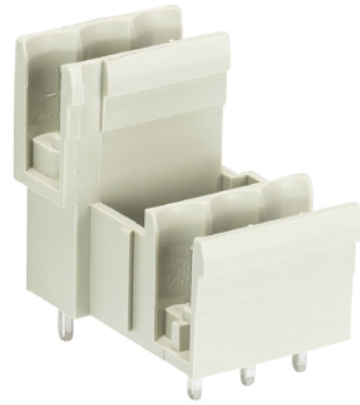


Data sheet

Commercial Art.No.: 25.354.3253.0

PCB pin header 8213 S E / 2 G OB

PCB pin header, connection method depends on used socket part , 2 poles, pitch: 5.08 mm, type of packing: carton, color: grey



Commercial Art.No.	25.354.3253.0
EAN	4015573194939
Order Unit	100

Certificates / Approvals



Technical data

General

Modular spacing	5.08 mm
Soldering process	Wave soldering
Packaging	Carton
Number of poles	2
Number of levels	2
Marking	No
Fastening	None
Mating direction towards (circuit) board	90°

Technical data

Rated current	10 A
Overvoltage Category I	1000 V
Overvoltage Category II	400 V
Overvoltage Category III	250 V
Rated impulse voltage	4 kV

Technical Data UL/CSA

Voltage UL	300 V
Current field wiring	15 A
Current factory wiring	15 A
Voltage CSA	300 V

Current CSA	10 A
-------------	------

Other

Type of insulation material	Thermoplastic
Color	Grey
Height	22 mm
Length	12.7 mm
Depth	23.3 mm
Material contact base	CuZn
Material contact surface	Sn

Classification

ECLASS 8.1	27440402
ETIM 7.0	EC002637
ETIM 6.0	EC002637
ETIM 5.0	EC002637
ETIM 4.0	EC002637

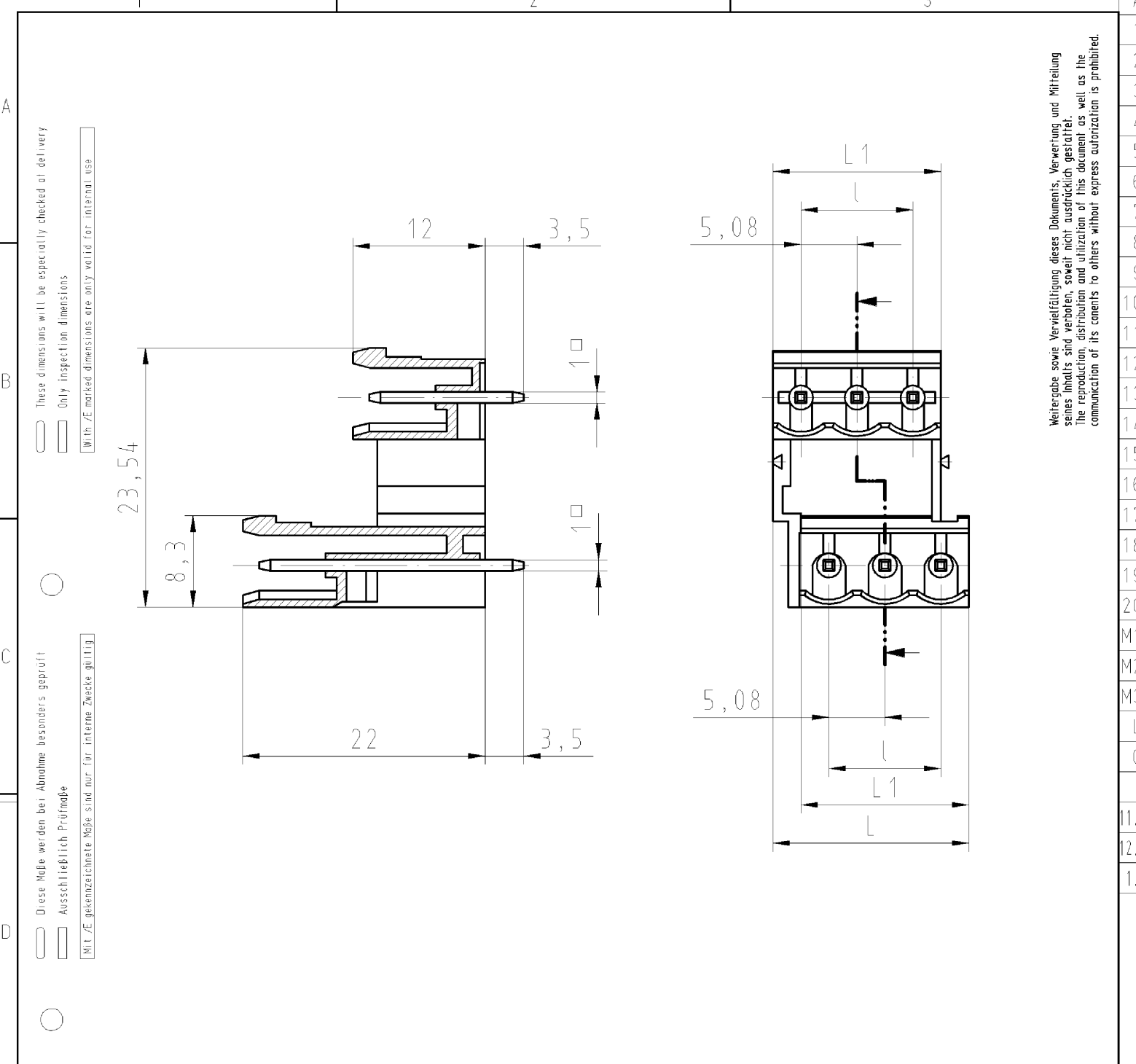
Product compliance

ROHS conformity status	Compliant
REACH-SVHC conformity status	Compliant

Fits with

Commercial Art.No.:	Article-type description:	Description:
25.240.3253.0	PCB connector 8213 B / 2 TOP OB	PCB female connector with front/top screw connection, 2 poles, max. cross section: 2.5 mm ² , pitch: 5.08 mm, type of packing: carton, color: grey
25.240.0253.0	PCB connector 8213 B / 2 TOP	PCB female connector with front/top screw connection, 2 poles, printed version, max. cross section: 2.5 mm ² , pitch: 5.08 mm, type of packing: carton, color: grey
25.340.3253.0	PCB connector 8213 B / 2 OB	PCB female connector with screw connection with rising cage clamp system, 2 poles, max. cross section: 2.5 mm ² , pitch: 5.08 mm, type of packing: carton, color: grey
25.340.0253.0	PCB connector 8213 B / 2	PCB female connector with screw connection with rising cage clamp system, 2 poles, printed version, max. cross section: 2.5 mm ² , pitch: 5.08 mm, type of packing: carton, color: grey
25.345.3253.0	PCB connector 8213 B / 2 VR OB	PCB female connector with screw connection with rising cage clamp system, 2 poles, max. cross section: 2.5 mm ² , pitch: 5.08 mm, type of packing: carton, color: grey
25.345.0253.0	PCB connector 8213 B / 2 VR	PCB female connector with screw connection with rising cage clamp system, 2 poles, printed version, max. cross section: 2.5 mm ² , pitch: 5.08 mm, type of packing: carton, color: grey
25.346.3253.0	PCB connector 8213 B / 2 VL OB	PCB female connector with screw connection with rising cage clamp system, 2 poles, max. cross section: 2.5 mm ² , pitch: 5.08 mm, type of packing: carton, color: grey
25.346.0253.0	PCB connector 8213 B / 2 VL	PCB female connector with screw connection with rising cage clamp system, 2 poles, printed version, max. cross section: 2.5 mm ² , pitch: 5.08 mm, type of packing: carton, color: grey
27.341.3253.0	PCB connector 8213 B / 2 S OB	PCB female connector, 2 poles, pitch: 5.08 mm, type of packing: carton,color: grey

25.840.3253.0	PCB connector 8213 BFK / 2 TOP OB	PCB female connector with tension spring connection, 2 poles, max. cross section: 2.5 mm ² , pitch: 5.08 mm, type of packing: carton, color: grey
25.840.0253.0	PCB connector 8213 BFK / 2 TOP	PCB female connector with tension spring connection, 2 poles, printed version, max. cross section: 2.5 mm ² , pitch: 5.08 mm, type of packing: carton, color: grey



Weitergabe sowie Vervielfältigung dieses Dokuments, Verwertung und Mitteilung seines Inhalts sind verboten, soweit nicht ausdrücklich gestattet. Die Reproduktion, Distribution und Nutzung dieses Dokumentes, sowie die Kommunikation von dessen Inhalten an Dritte ohne schriftliche Genehmigung ist untersagt.

Teile - Nr. part - no.	Typ type	Polzahl poles	L	L1	l
25.354.3253.0	8213 SE/ 2 G OB	2	12,7	10,16	5,08
25.354.3353.0	8213 SE/ 3 G OB	3	17,78	15,24	10,16

Tolerierung nach DIN 7167/Tolerance system acc. to DIN 7167. (This DIN-standard describes the envelope principle. According to the envelope principle the deviations of form and parallelism are limited by the size tolerances). ja/yes Stoffverbots- und Deklarationsliste nach UU-TQM-05/03 ist einzuhalten. Conformity with Wieland document UU-TQM-05/03 (list of prohibited / declarable hazardous substances) to be declared!

Freitoleranz nach General tolerance CAD - Zeichnung, keine manuellen Änderungen CAD - drawing, no manual modifications allowed 1.Verwendung: First Use: Blatt: 1 von 1 Sheet: 1 of 1

Werkstoff/Material		2007	Tag/Date	Name	Zeichnung Nr./Drawing No.	Index	
/		gezeichnet drawn	22.03.	Treschan			
		geprüft checked	-	-			
Maßstab/Scale		Normgepr. Stand, check	-	-	T 25.354.3353.0 01K	Maße in mm/Dimensions are in mm	
2:1		Ersatz für/Replacement for: -					
Vol.		mm ³ Of l./Surf.		mm ²		-	
/		wieland		Type	double-deck-header		
/		Elektrische Verbindungen		Typ	ETAGENSTIFTLISTE		
Index		Datum / Blatt Date / Sheet		8213 SE /		passend für 8213 B.. gerade ; ohne Codierung	
Änderung/Revision		2-3 G OB		-		suitable for 8213B.. straight ; without coding	

253543353001K_4 CADW1044 treschan 2007-03-22T12:50:17 1.000