

Data sheet

Commercial Art.No.: 70.353.0636.1

Hood EX GOT GG 6 M25 09IA Z1

Hood revos Ex made of zinc, for single locking lever with threaded hole M25 on the right side, low version, 6-poles explosion-tested version



Commercial Art.No.	70.353.0636.1
EAN	4015573740785
Order Unit	1

Certificates / Approvals



Technical data

General

Explosion-tested version	yes
Housing material	Die-cast zinc
Color	Blue
Operating temperature range min.	-20 °C
Operating temperature range max.	60 °C

Model

Construction	6
Model of the housing	male
Locking mechanism	Single locking lever
Cable entry	Sideways
Type of cable	Thread
With cable screw gland	No
Thread size M	25
Thread size PG	
EMC-version	No
Length	74 mm
Width	43 mm
Height	48 mm

Classification

ECLASS 11	
ECLASS 8.1	27440202

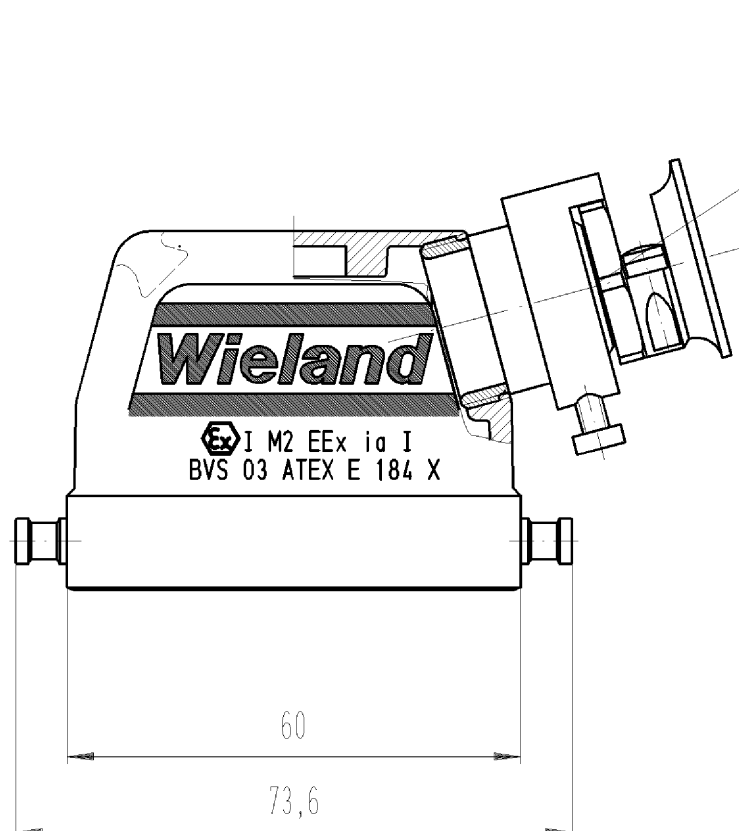
ETIM 7.0	EC000437
ETIM 6.0	EC000437
ETIM 5.0	EC000437

Product compliance

ROHS conformity status	Compliant/Exempted
ROHS exceptions	III-6(c)
REACH-SVHC conformity status	Duty-To-Declare
REACH-SVHC substances	Lead
REACH-SVHC CAS numbers	7439-92-1

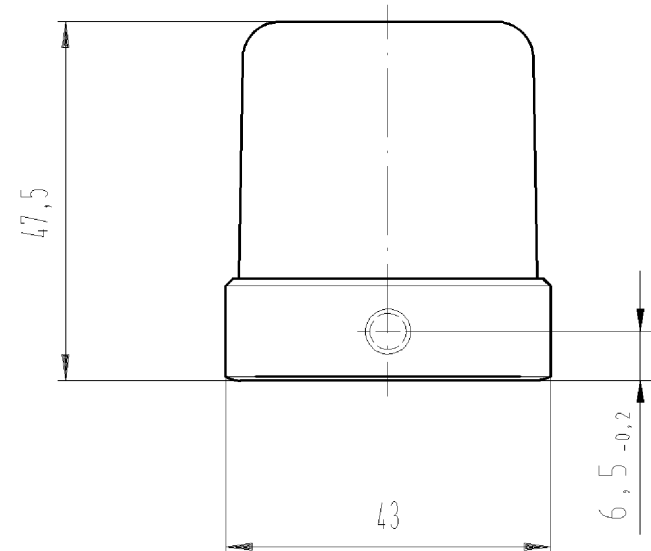
These dimensions will be especially checked at delivery
Only inspection dimensions
With /E marked dimensions are only valid for internal use

Diese Maße werden bei Abnahme besonders geprüft
Ausschließlich Prüfmaße
Mit /E gekennzeichnete Maße sind nur für interne Zwecke gültig



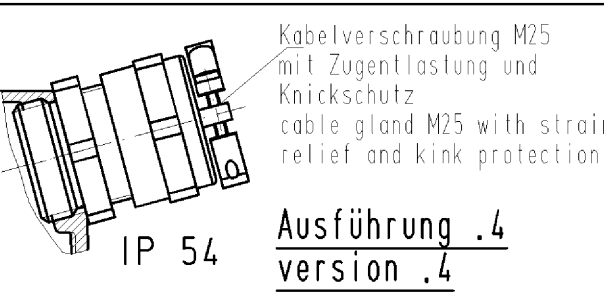
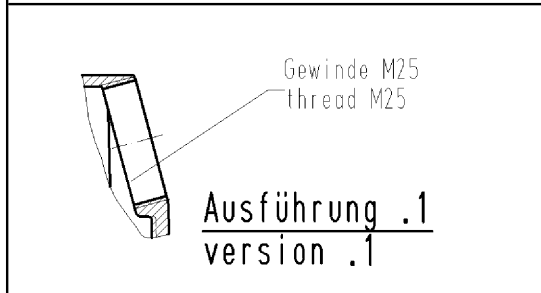
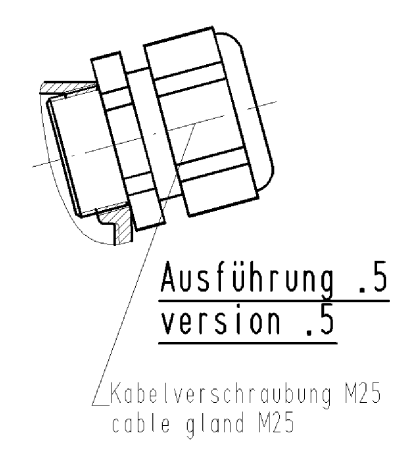
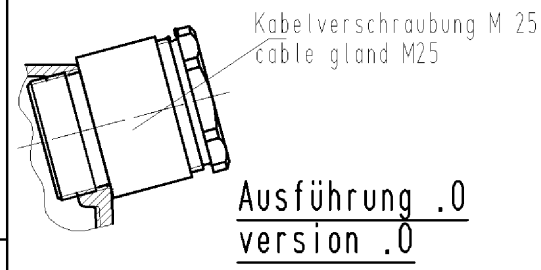
Kabeldurchführung M25
mit Zugentlastung und
Biegeschutz
cable gland M25 with
strain relief and
bending protection

Ausführung .3
version .3



Weitere Daten siehe Katalog
further data see catalog

Teile - Nr. part no.	Typ type
70.353.0636.0	EX GOT GG 6 M25 091A Z0
70.353.0636.1	EX GOT GG 6 M25 091A Z1
70.353.0636.2	EX GOT GG 6 M25 091A Z2
70.353.0636.3	EX GOT GG 6 M25 091A Z3
70.353.0636.4	EX GOT GG 6 M25 091A Z4
70.353.0636.5	EX GOT GG 6 M25 091A Z5



IP 65

Tolerierung nach DIN 7167/Tolerance system acc. to DIN 7167. (This DIN-standard describes the envelope principle. According to the envelope principle the deviations of form and parallelism are limited by the size tolerances).		ja/yes <input checked="" type="checkbox"/> Stoffverbots- und Deklarationsliste nach UU-TQM-05/03 ist einzuhalten. Conformity with Wieland document UU-TQM-05/03 (list of prohibited / declarable hazardous substances) to be declared!	
Freitoleranz nach General tolerance	CAD - Zeichnung, keine manuellen Änderungen CAD - drawing, no manual modifications allowed	1. Verwendung: First Use:	Blatt: 1 von 1 Sheet: of 1
Werkstoff/Material	2008 Tag/Date	Name	T 70.353.0636.0 01K
Maßstab/Scale	gezeichnet drawn 11.02.	Schmitt J.	
Vol. mm³	Ofl./Surf. mm²	Ersatz für/Replacement for: -	
wieland		Typ	Benennung/Title
Elektrische Verbindungen		EX GOT GG 6 M25 091A	GEHAEUSEOBERTE IL Größe 6/M25 schmale Seite Hood size 6/M25 narrow side
Index	Datum / Blatt Date / Sheet	Änderung/Revision	

Weitergabe sowie Vervielfältigung dieses Dokuments, Verwertung und Mitteilung seines Inhalts sind verboten, soweit nicht ausdrücklich gestattet.
The reproduction, distribution and utilization of this document as well as the communication of its contents to others without express authorization is prohibited.

703530636001K_4_CADW1042_Schnitt 2008-02-12T11:54:07 1.000