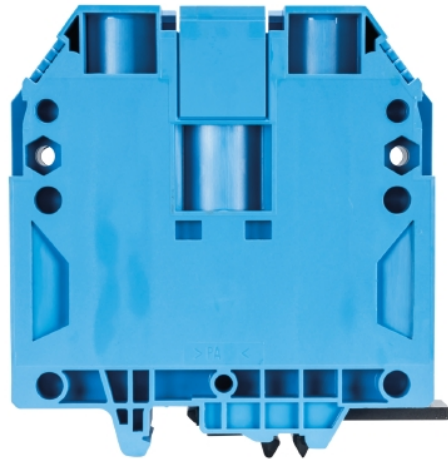


## Data sheet

Commercial Art.No.: 57.597.0155.6

Feed-through terminal WKN 150 /U BL/V0

Feed-through terminal with Screw connection for mounting on TS 35/ TS 32, nominal cross section: 150 mm<sup>2</sup>, width: 28 mm, color: blue



Commercial Art.No.	57.597.0155.6
EAN	4015573488038
Order Unit	10

Certificates / Approvals



CAN-Ex

ATEX

SEV-Ex



## Technical data

### General

Nominal cross section	150 mm <sup>2</sup>
Color	Blue
Number of levels	1
Number of clamp positions per level	2
Width/grid dimension	28 mm
Insulating housing	PA666
Inflammability class of insulation material acc. with UL94	V0
Explosion-tested version "Ex e"	yes
Mounting method	DIN rail (top hat rail)/G-rail
Terminal blocks for electrical installations	No

### Technical data

Rated current	309 A
Rated voltage	1000 V
Rated impulse voltage	8 kV
Pollution degree	3
Closing plate required	No
Type of insulation material	Thermoplastic
Length	96 mm

### Connection Data

Connection type 1	screw connection
-------------------	------------------

Connection type 2	screw connection
Minimum cross section fine stranded	35 mm <sup>2</sup>
Maximum cross section fine stranded	150 mm <sup>2</sup>
Minimum cross section stranded	35 mm <sup>2</sup>
Maximum cross section stranded	185 mm <sup>2</sup>
Wire strip length	30 mm
Torque conductor mounting	10 Nm

#### Technical Data UL/CSA

Cross section UL	2/0 AWG - 350 kcmil
Voltage UL	600 V
Current factory wiring	335 A
Current field wiring	335 A
Cross section CSA	2/0 AWG - 350 kcmil
Voltage CSA	1000 V
Current CSA	365 A

#### Classification

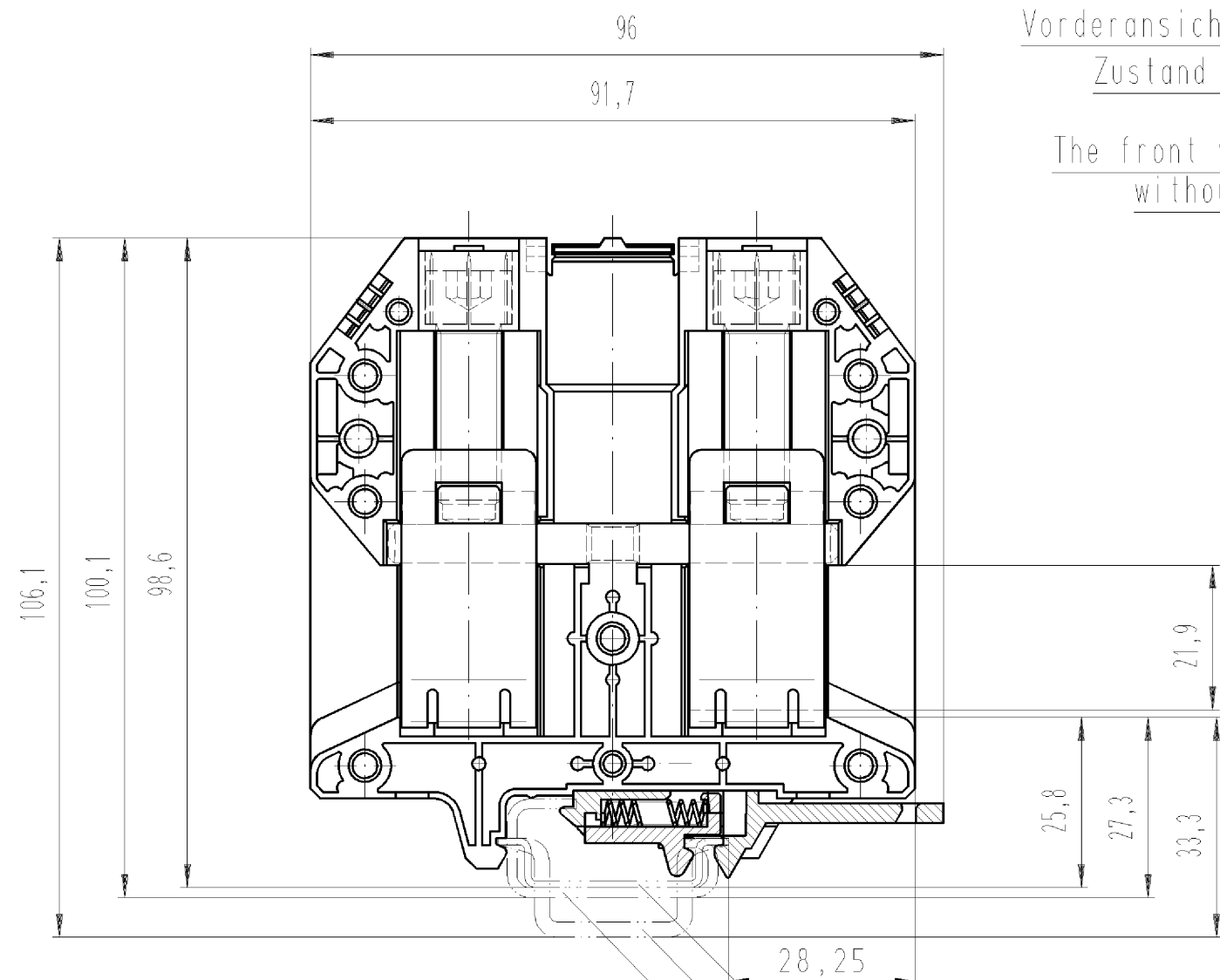
ECLASS 11	
ECLASS 8.1	27141120
ETIM 7.0	EC000897
ETIM 6.0	EC000897
ETIM 5.0	EC000897
ETIM 4.0	EC000897
ETIM 3.0	EC000897

#### Product compliance

ROHS conformity status	Compliant/Exempted
ROHS exceptions	III-6(c)
REACH-SVHC conformity status	Duty-To-Declare
REACH-SVHC substances	Lead
REACH-SVHC CAS numbers	7439-92-1

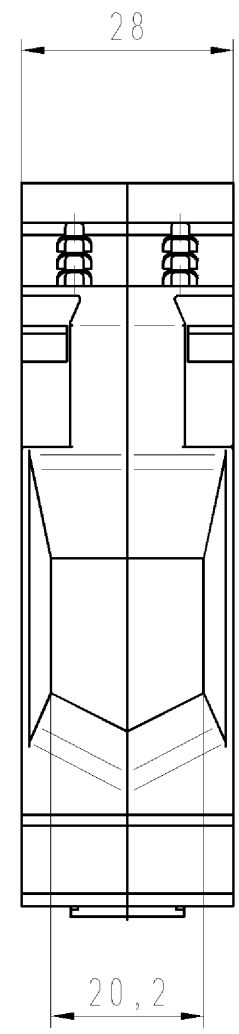
#### Accessories

Commercial Art.No.:	Article-type description:	Description:
Z7.287.1227.0	Jumper bar VBWKN150 - 2	Cross connector for DIN rail terminal blocks type WKN ..., 2 -pole
Z7.287.1327.0	Jumper bar VBWKN150 - 3	Cross connector for DIN rail terminal blocks type WKN ..., 3 -pole
98.300.0000.0	Mounting rail TS 35x7,5 UNPERF - l:2000mm	Mounting rail TS 35, unslotted, size 7,5 mm, length 2 m, material steel. galv. zinc-plated and dichromated
98.370.0000.0	Mounting rail TS 35x15 UNPERF - l:2000mm	Mounting rail TS 35, unslotted, size 15 mm, length 2 m, material steel. galv. zinc-plated and dichromated
98.370.1000.0	Mounting rail TS 35x15 PERF 15mm - l:2000mm	Mounting rail TS 35, slotted, size 15 mm, length 2 m, material steel. galv. zinc-plated and dichromated



Vorderansicht im geöffnetem  
Zustand gezeichnet.

The front view be drawn  
without cover.



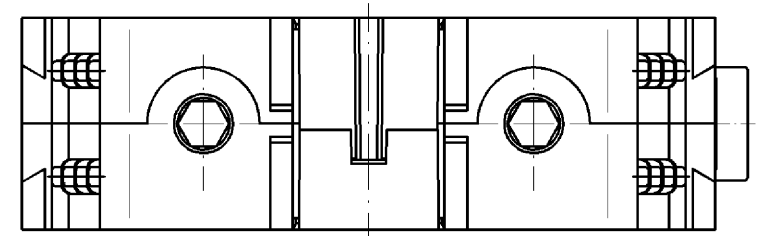
○ Diese Maße werden bei Abnahme besonders geprüft  
 □ Ausschließlich Prüfmaße  
 ○ Mit /E gekennzeichnete Maße sind nur für interne Zwecke gültig

- Hutschiene EN 60715-35x7,5  
mounting rail EN 60715-35x7,5
- Hutschiene EN 60715-35x15  
mounting rail EN 60715-35x15
- G-Schiene EN 60715-632  
G-rail EN 60715-632

spezielle Verpackung \*  
specific package

Teile.-Nr. part-number	Farbe colour	Typ type
57.597.0155.0	grau/grey	WKN 150/U /VO
57.597.0155.6	blau/blue	WKN 150/U BLAU /VO
* 57.597.0195.0	grau/grey	WKN 150/U /VO
* 57.597.0195.6	blau/blue	WKN 150/U BLAU /VO

Weitere Daten siehe Katalog  
further data see catalog



Freitoleranz nach DIN		CAD - Zeichnung, keine manuellen Änderungen		1. Verwendung: -		Bl.: 1 von 1	
	Maßstab	2004	Tag	Name		Zeichnung Nr.	
	%	Entworfen	29.11.	Schmitt J.		T 57.597.0155.0 01K	
		Geprüft	-	-		Index	
		Normgepr.	-	-		Ersatz für: -	
Buchstabe Datum / Blatt		Benennung		DURCHGANGSKLEMME			
Änderung		Elektrische Verbindungen		modular terminal			

Weitergabe sowie Vervielfältigung dieses Dokuments, Verwertung und Mitteilung seines Inhalts sind verboten, soweit nicht ausdrücklich gestattet. The reproduction, distribution and utilization of this document as well as the communication of its contents to others without express authorization is prohibited.

575970155001K\_4\_CAD/MO28\_Schnitt 2004-11-29T09:56:52 1.000