

DZ series socket filter

特点 Features

- IEC标准插座式一体化滤波器
IEC connector integrative filters
- 性价比高
High performance to cost make

应用 Applications

- 用于小型电子设备和电子测量仪器
Available for mini-electronic equipments and measuring instruments



技术参数 Technical Data

额定电压 Rated Voltage	250VAC
工作频率 Operating Frequency	50/60Hz
额定电流 Rated Current	3A-15A
耐压试验:(一分钟) Test Voltage (1min)	1500VDC (line/line) 1500VAC (line/ground)
气候类别 Climatic Category	25/085/21

型号 Model	端子方式 Terminal		额定电流 Rated Current (A)	接地电容量 Ground Capacitance (nF)	泄漏电流 Leakage Current ≤(mA)	放电电阻 Discharge Resistance (MΩ)	电路图 Circuit Diagram fig.	外形尺寸 Dimension fig.
	入 Input	出 Output						
DL-3DZ2			3	3.3	0.5		1	1
DL-6DZ2			6	3.3	0.5		1	1
DL-10DZ2			10	4.7	0.8		1	1
DL-15DZ2			15	2.2	0.5	1	2	1

电原理图 Typical Circuit Diagram

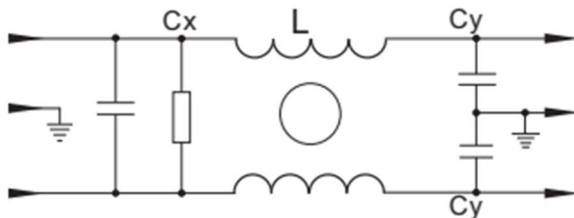


fig.1

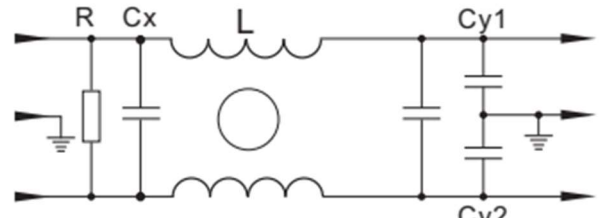
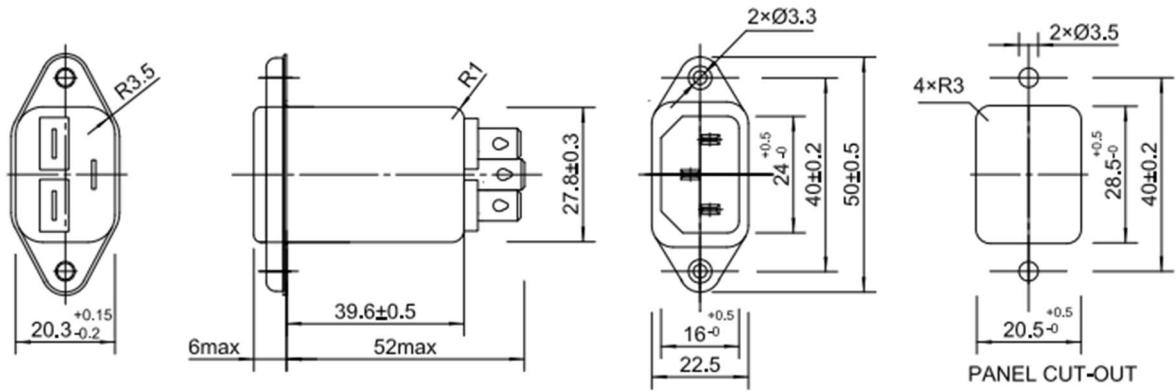


fig.2

外形尺寸 Outline Drawing and Dimensions (mm)



插入损耗 Insertion Loss in dB

(50 Ω 测量系统, IEC/CISPR No.17 号出版物 Measured in 50 Ω system, as IEC/CISPR No. 17)

