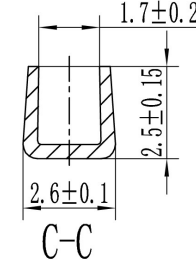
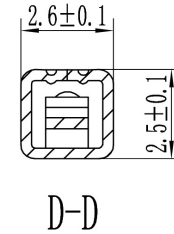
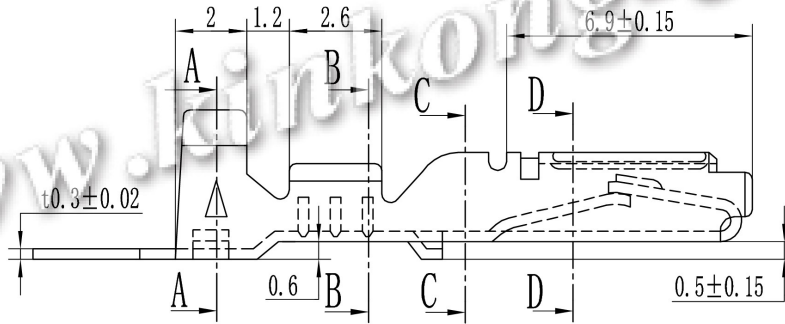
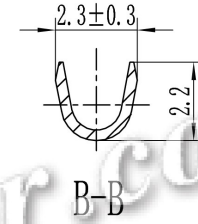
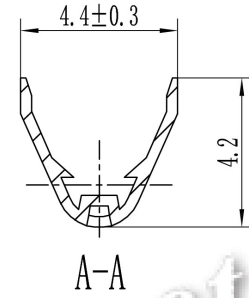
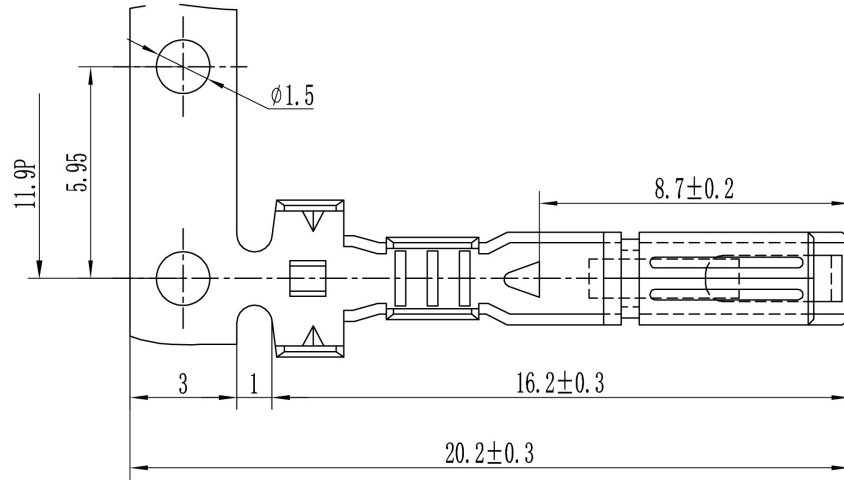


CKK008-1.8FNH1

标记 MARK	ECN	修改内容 REVISIONS	签名 DWN.	日期 DATE



NOTES:

- The sharp Angle is blunt.
- No tolerance shall conform to the requirements of GB/15055-2007-m.
- On the machining surface of parts, there should be no scratches, scrapes and other damage parts surface defects.

技术要求

- 锐角倒钝。
- 未注公差应符合GB/15055-2007-m的要求。
- 零件加工表面上，不应有划痕、擦伤等损伤零件表面的缺陷。

未注尺寸公差表 NO. TOLERANCES GB/15055-2007-m	
尺寸范围 DIM. RANGE	尺寸公差 DIM. TOLERANCES
0.5~3	±0.20
>3~6	±0.30
>6~30	±0.40
>30~120	±0.50

镀涂 SURFACE TREATMENT	镀锡 Tinning	乐清市千工电器有限公司 YUEQING KINKONG ELECTRIC CO., LTD.					
产品材料 MATERIAL	Brass	设计 DARAWN BY		审核 CONFIRMED BY		批准 APPROVED BY	
产品名称 NAME	端子 TERMINAL						
线径 WIRE DIAMETER	0.3~0.5mm ²						
产品型号 TYPE	CKK008-1.8FNH1	版次 REV.		第一视角 1st-PERSON VIEW	比例 FREE	单位 UNIT	页数 PAGE
客户型号 ARTICLE NO.		1.0		1:1	mm	1/1	
重量 WEIGHT							

www.kinkong-connector.com