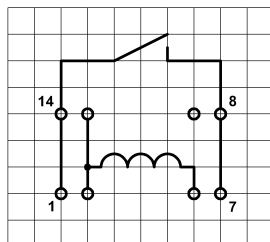
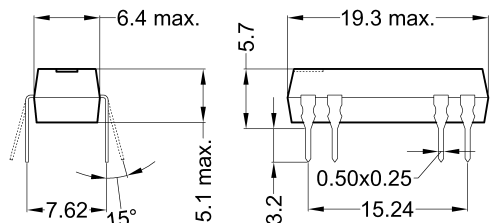


Dimensions

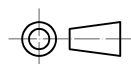
Layout 12L Pitch 2.54 / Top View

Marking

Type - Layout
 Production-Code
 EN60062



MEDER electronic
 DIP24-1A72-12L
 Y-W



unspecified tolerances $\pm 0.1\text{mm}$
 nicht spezifizierte Toleranzen $\pm 0.1\text{mm}$

| Coil Data at 20 °C | Conditions | Min | Typ | Max | Unit |
|--------------------|--|-------|-------|-------|------|
| Coil resistance | | 1.800 | 2.000 | 2.200 | Ohm |
| Coil voltage | | | 24 | | VDC |
| Rated power | | | 288 | | mW |
| Coil current | | | 12 | | mA |
| Thermal resistance | max. Relay temperature = operating temperature + self heating | | 100 | | K/W |
| Inductance | | | 220 | | mH |
| Pull-In voltage | | | | 16,8 | VDC |
| Drop-Out voltage | | 3,6 | | | VDC |

| Contact data 66/3 | Conditions | Min | Typ | Max | Unit |
|-----------------------------|--|-----|-----|-----|-------|
| Contact rating | Any DC combination of V & A not to exceed their individual max.'s | | | 10 | W |
| Switching voltage | DC or Peak AC | | | 200 | V |
| Switching current | DC or Peak AC | | | 0,5 | A |
| Carry current | DC or Peak AC | | | 1 | A |
| Contact resistance static | Measured with 40% overdrive Start Value | | | 150 | mOhm |
| Insulation resistance | RH <45 %, 100 V test voltage | 1,5 | | | TOhm |
| Breakdown voltage (> 20 AT) | according to IEC 255-5 | 0,5 | | | kV DC |
| Operate time incl. bounce | measured with 40% overdrive | | | 0,5 | ms |
| Release time | measured with no coil excitation | | | 0,1 | ms |
| Capacity | @ 10 kHz across open switch | | 0,3 | | pF |

| Special Product Data | Conditions | Min | Typ | Max | Unit |
|------------------------------------|-------------------------------|-----|---------------------------|-----|-------|
| Number of contacts | | | 1 | | |
| Contact - form | | | A - NO | | |
| Dielectric Strength Coil/Contact | according to IEC 255-5 | 1,5 | | | kV DC |
| Insulation resistance Coil/Contact | RH <45%, 200 VDC test voltage | 5 | | | TOhm |
| Capacity Coil/Contact | @ 10 kHz | | 0,8 | | pF |
| Case colour | | | black | | |
| Housing material | | | epoxy resin | | |
| Connection pins | | | CuFe2P tin plated | | |
| Magnetic Shield | | | no | | |
| Reach / RoHS conformity | | | yes | | |
| Approval | | | UL File No. NRNT2.E156887 | | |
| Approval | | | UL File No. NRNT8.E156887 | | |

Modifications in the sense of technical progress are reserved



Products for tomorrow...

Europe: +49 / 7731 8399 0 | Email: info@meder.com
USA: +1 / 508 295 0771 | Email: salesusa@meder.com
Asia: +852 / 2955 1682 | Email: salesasia@meder.com

Item No.:
3224100012
Item:
DIP24-1A72-12L

| Environmental data | Conditions | Min | Typ | Max | Unit |
|-----------------------|-----------------------------|-----|-----|--------------|------|
| Shock | 1/2 sine wave duration 11ms | | | 50 | g |
| Vibration | from 10 - 2000 Hz | | | 20 | g |
| Operating temperature | | -20 | | 70 | °C |
| Storage temperature | | -35 | | 95 | °C |
| Soldering temperature | wave soldering max. 5 sec. | | | 260 | °C |
| Washability | | | | fully sealed | |

| General data | Conditions | Min | Typ | Max | Unit |
|--------------|------------|-----|-----|-------------------|------|
| Total weight | | | 1,4 | | g |
| Packaging | | | | Tube per 25 piece | |

Modifications in the sense of technical progress are reserved

Designed at: 04.12.00 Designed by: KMUELLER Approval at: 10.09.08 Approval by: JHEYDER
Last Change at: 29.10.09 Last Change by: SERVICES_EUROPE Approval at: 02.11.09 Approval by: KOLBRICH

Version: 2